

FRONT VIEW

LOT AC/SF: 1.45 / 63,162
TOTAL FINISHED SF: 11,772



www.1290BERRYPLACE.COM



\$ 4,599,888

FRONT VIEW

LOT AC/SF: 1.45 / 63,162
TOTAL FINISHED SF: 11,772

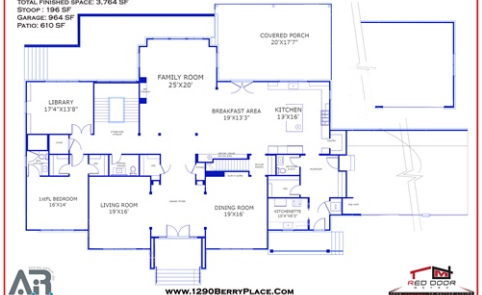


www.1290BERRYPLACE.COM



1ST FLOOR

TOTAL FINISHED SPACE: 3,764 SF
BROOK: 196 SF
GARAGE: 964 SF
PATIO: 610 SF

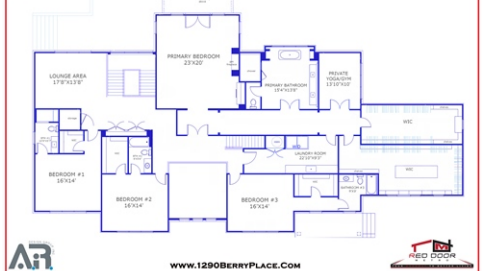


www.1290BERRYPLACE.COM



2ND FLOOR

TOTAL FINISHED SPACE: 4,818 SF
BALCONY: 127 SF
2 STORY: 310 SF

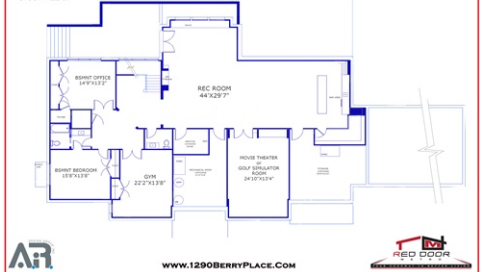


www.1290BERRYPLACE.COM



BASEMENT

TOTAL SPACE: 3,790 SF
FINISHED SPACE: 3,188 SF
UNFINISHED SPACE: 592 SF
BROOK: 422 SF



www.1290BERRYPLACE.COM



1290 Berry Place, McLean, VA 22102

- » Beds: 6 | Baths: 6 Full, 3 Half
- » Single Family | 7,982 ft² | Lot: 63,144 ft² (1.45 acres)
- » More Info: 1290BerryPlace.com



Red Door Metro
of Keller Williams Realty
(703) 906-2881 (Main)
1 (844) 596-3876 (Toll Free)
clientcare@reddoormetro.com
http://www.reddoormetro.com



Red Door Metro
1775 Tysons Blvd
Suite 1450
McLean, VA 22102
(703) 564-4000

Come home to 1290 Berry Place, a luxurious New Construction estate by A.R Design Group with Interior Design by Hallstrom & Associates in the heart of McLean. This 11,180 square foot property is filled with stunning features and amenities built for entertaining.

Enjoy a 4-car garage and private 1.5 acre lot for ultimate privacy and relaxation. Inside you will find 6 spacious bedrooms with massive double walk-in closets in each bedroom and each bedroom has its own en suite full bath plus an additional 3 half baths throughout the home. The main level boasts a large catering kitchen as well as a first floor bedroom, perfect for visiting guests or family members who need quick access to the main living area.

A movie theatre or golf simulator room adds an extra touch of class while the elevator ready option allows your family to enjoy every level of this expansive residence without worry over accessibility needs down the line. With plenty of space in the backyard on which to add a pool plus easy access to Tysons Corner, this magnificent property is truly ideal! Still time to customize features/options

